



C3 and SC3 Regional Advisory Board

August 28, 2019



WESTMINSTER PUBLIC SCHOOLS

SUBURBAN DISTRICT – PK - 12

Students – 9,300

School Breakdown

- 8 Elementary Schools
- 3 Middle Schools
- 5 PK8 Innovation/Magnet Schools
- 2 High Schools (one alternative)
- Early Childhood Center (PK)
- Early Learning Center (Birth-PK)
- Day Treatment Program (ISC)

Student Enrollment at 9,200

- Hispanic 76%
- White 16%
- Other 8%
- Free & Reduced Lunch 79%
- English Language Learners 39%
- SpEd 12%
- **Staff of 1,061**
 - 576 Teachers
 - 416 Support Staff

10 PLUS YEARS OF PCBL IMPLEMENTATION

Westminster Public Schools

Preschool – 12th Grade

Vision

Preparing future leaders, learners and thinkers for a global community.



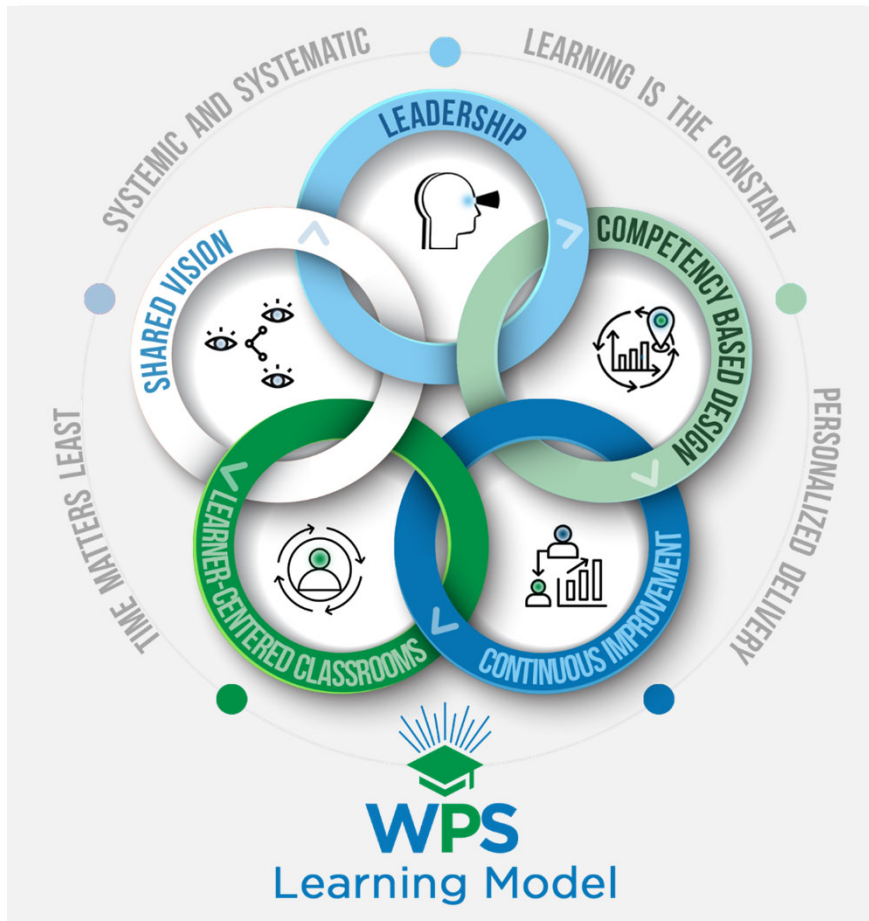
Westminster
Public Schools
Where Education is Personal

Mission

Westminster Public Schools will create opportunities to develop competent, agile learners who will contribute to their community and achieve personal success.

Westminster Learning Model

Personalized, Competency Based System



Shared Vision

- Prepare students for the day after graduation.
- Honor diversity
- Nurture the love of learning
- Serve as a leader in the field



Leadership

- Students
- Parents
- Teachers
- Administrators
- Board and Community
- Relationships



Competency Based Design

- Well-defined Standards
- Aligned Assessments
- Instructional Model
- Reporting and Recording
- Scheduling



Continuous Improvement

- Strategic Planning
- Alignment of Policies
- Unified Improvement Plans
- Progress Monitoring Cycles
- Professional Development
- Personal and Collective



Learner-Centered Classroom

- Student Agency and Engagement
- Personalized Instruction
- Classroom Shared Vision & Code of Conduct
- Students set their own goals and monitor their learning
- Students are partners in the teaching-learning cycle

Definition of a Learner-centered Classroom

A true Learner-centered classroom is where “learners and teachers respond to and reflect on progress in order to build ownership and independence by involving teachers and other learners to become problems solvers, move through levels, meet their goals and figure out their own path to success; learners have the opportunity to make choices and demonstrate proficiency throughout the learner-centered classroom.

Teachers instruct and guide individual learners, small groups, as well as the whole class to set high expectations for all learners and determine the most effective instructional strategies for each learner in the classroom.”

- Developed by Westminster Public Schools Instructional Staff (2011)

WESTMINSTER PUBLIC SCHOOLS
State Accreditation Designations

2016	
Schools	Points
Col. STEM Academy	75.9
Mesa ES	59.3
Sunset Ridge ES	55.7
Hidden Lake HS	58.8*
Sherrelwood ES	52.1
Tennyson Knolls ES	52.1
Skyline Vista ES	49.8
Scott Carpenter MS	47.8
Hodgkins ES	46.1
Westminster ES	42.6
Metz ES	40.0
Shaw Heights MS	39.5
Westminster HS	37.7
Flynn ES	36.0
FM Day ES	35.4
Ranum MS	35.2
Harris Park ES	34.2
Fairview ES	26.1

2017	
Schools	Points
Col. STEM Academy	78.6
Westminster Academy	65.7
Shaw Heights MS	56.7
Hodgkins ES	56.7
Hidden Lake HS	55.7*
Tennyson Knolls ES	52.8
Scott Carpenter MS	50.5
Harris Park ES	49.4
Sherrelwood ES	49.2
Flynn ES	47.9
Mesa ES	47.5
Sunset Ridge ES	45.2
Fairview ES	40.7
Metz ES	40.0
FM Day ES	39.3
Ranum MS	38.7
Skyline Vista ES	38.5
Westminster HS	37.5

2018	
Schools	Points
Col. STEM Academy	88.0
Metz ES	67.7
Mesa ES	64.2
Westminster Academy	64.2
Fairview ES	60.4
Skyline Vista ES	60.4
Scott Carpenter MS	55.9
Hodgkins ES	54.6
Sunset Ridge ES	54.3
Hidden Lake HS	54.3*
FM Day ES	52.7
Sherrelwood ES	50.9
Flynn ES	50.7
Ranum MS	50.3
Shaw Heights MS	49.2
Harris Park ES	45.8
Tennyson Knolls ES	42.9
Westminster HS	40.8

Preliminary 2019	
Schools	Points
Col. STEM Academy	90.7
Skyline Vista ES	68.5
Westminster Academy	66.6
Shaw Heights MS	62.8
Metz ES	59.9
Hodgkins ES	58.0
Sunset Ridge ES	55.2
Fairview ES	50.7
Ranum MS	49.8
Scott Carpenter MS	49.6
Harris Park ES	48.6
Flynn ES	48.4
Mesa ES	46.3
Westminster HS	42.3
FM Day ES	42.3
Hidden Lake HS	**
Sherrelwood ES	40.5
Tennyson Knolls ES	38.9

District 39.9

District 41.5

District 44.5

District 44.2